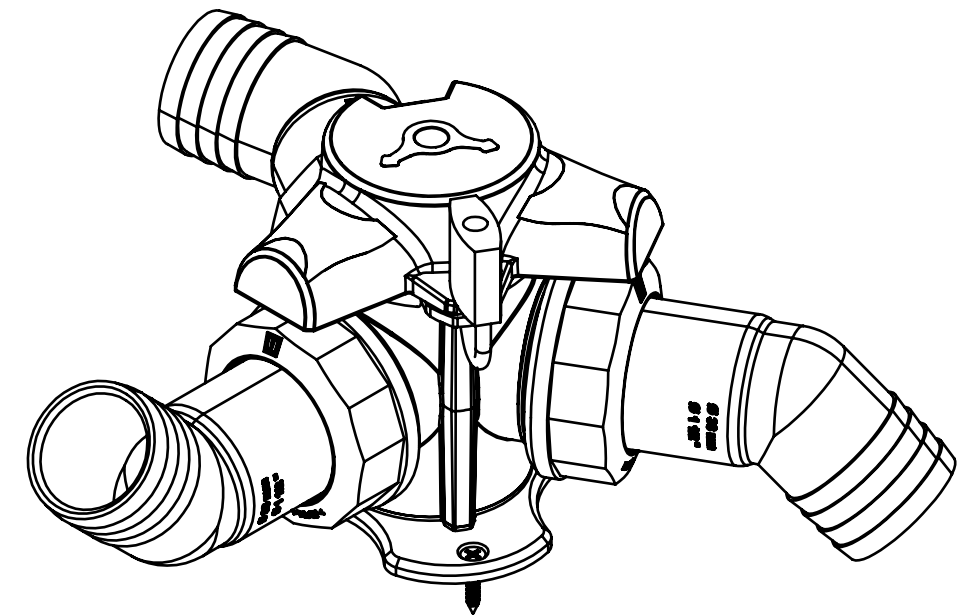




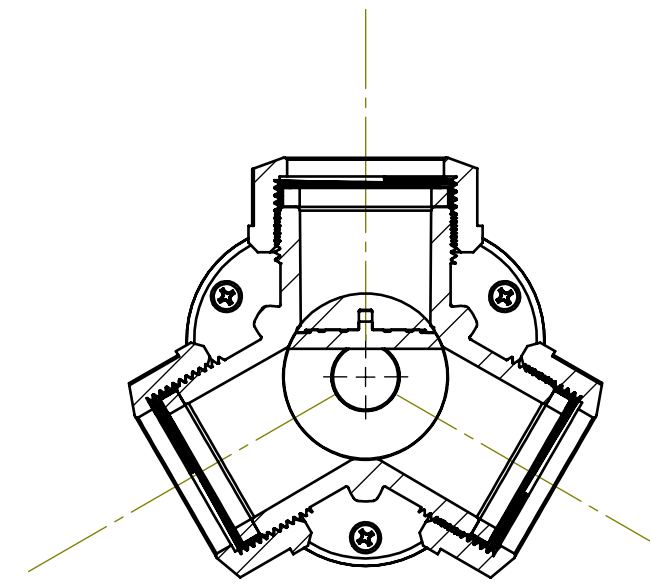
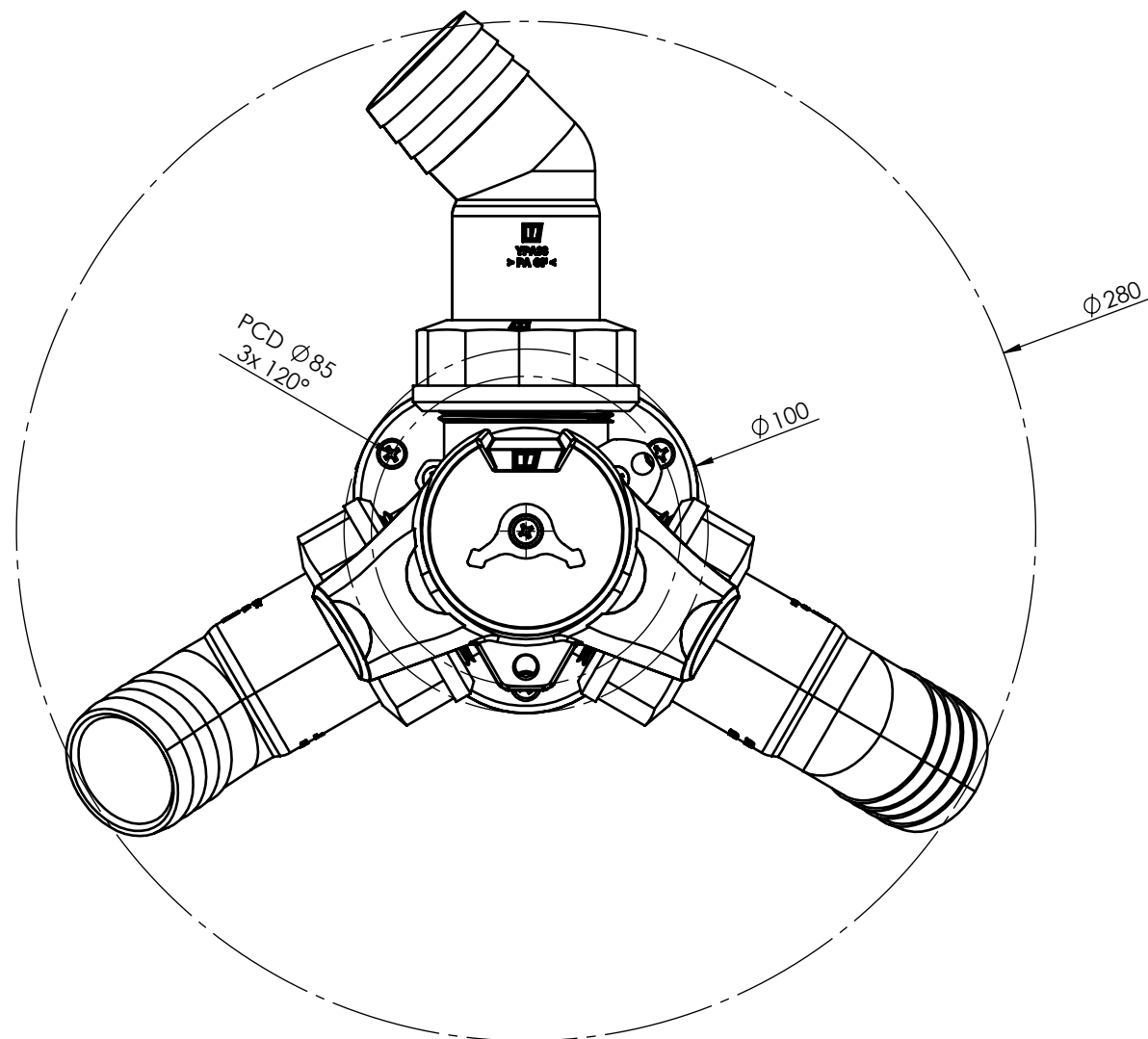
Y-valve 3x M48x2. Excl. connectors

PART OF THE Y-LINE PRODUCT FAMILY

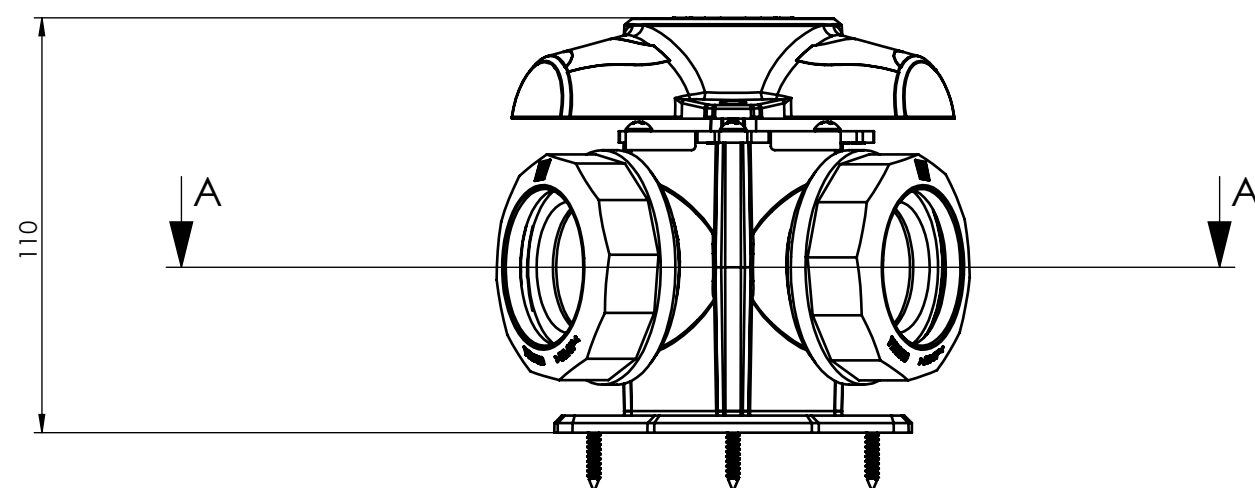
- MARINE-GRADE REINFORCED POLYMER (PA-GF) HOUSING
- HIGH STRENGTH
- 100% NON-CORROSIVE
- LEAK FREE PERFORMANCE
- 360° ROTABLE 45° HOSE CONNECTIONS
- ROBUST ICONIC HANDLE DESIGN
- EASY OPERATION BY 120° MOVEMENT
- LOCKABLE VALVE POSITION (ORDER LOCK SEPERATELY)
- SUITABLE FOR TEMPERATURES OF -20° UP TO 110°C
- UP TO 4,5 BAR (65 PSI) IN FLOW DIRECTION
- MAXIMUM PRESSURE ON VALVE UP TO 1 BAR (10 m WATER COLUMN, 14,5 PSI)
(ACTUAL PRESSURE DEMAND UNDER DISCUSSION; NEEDS TO BE TESTED)
- INCLUDING THREE-POINT MOUNTING FLANGE AND MOUNTING SCREWS
- EXCLUDING HOSE CONNECTORS
SELECT HOSE CONNECTOR DIAMETER OF CHOICE; Ø 38 / 32 / 28,5 / 25 / 19 mm



Y-valve 3x M48x2. Excl. connectors



SECTION A-A



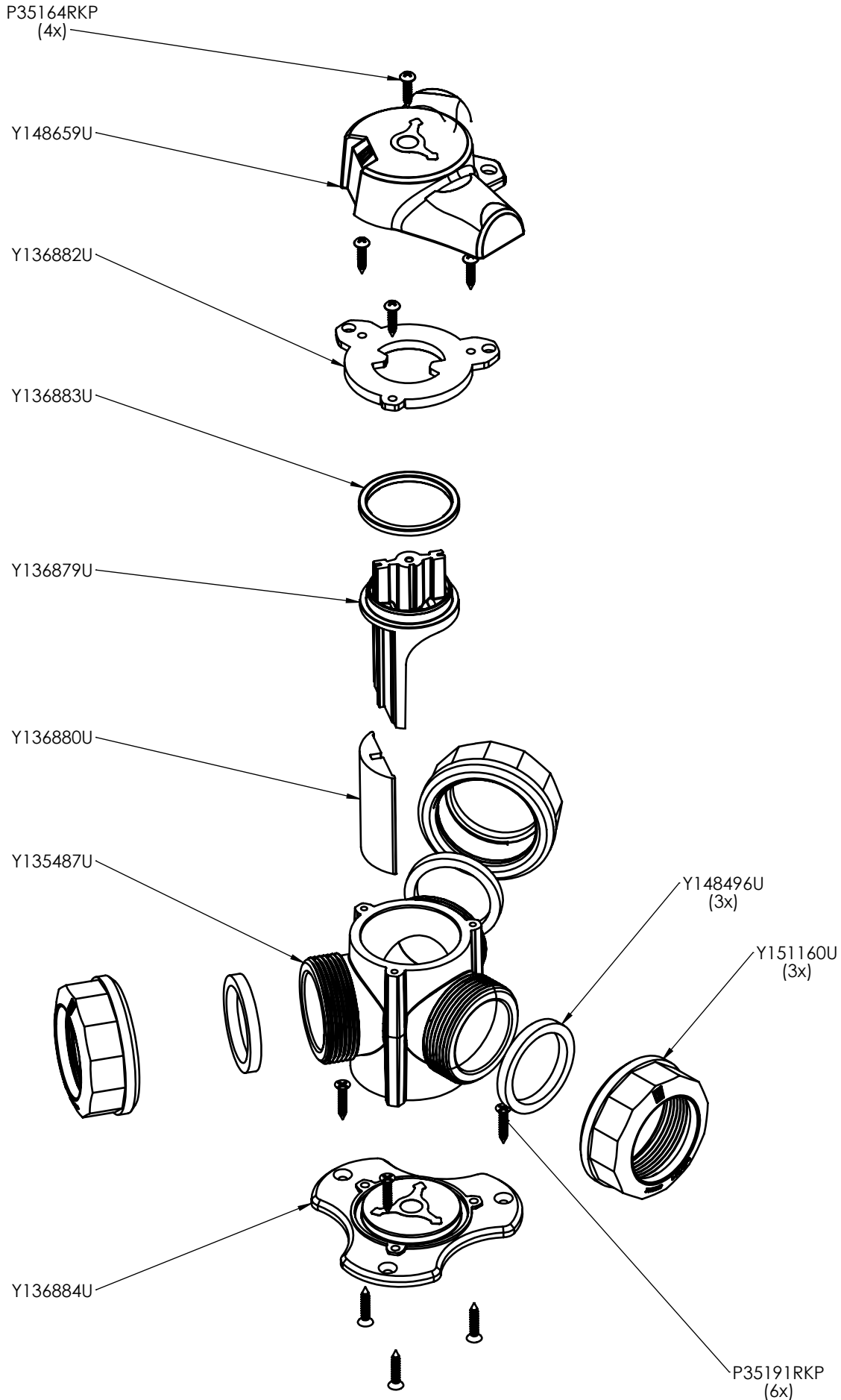


Exploded View

13-5488

Y3V

Y-valve 3x M48x2. Excl. connectors



PART NUMBER	ERP code	QTY.	Description	Description 2
13-5487	Y135487U	1	Main housing 3-way	3x M48x2. Dark blue, PA-GF
13-6884	Y136884U	1	Mounting foot 3-way	Dark blue, PA-GF
13-6882	Y136882U	1	Top valve ring	for valve-lever positioning
13-6880	Y136880U	1	Valve external	Rubber rotating part
13-6879	Y136879U	1	Valve	Rotating part
13-6883	Y136883U	1	Square gasket ring	rubber
14-8659	Y148659U	1	Knob YC valve	black
14-8496	Y148496U	3	Sealing ring, red.	For M48x2 hose connectors
15-1160	Y151160U	3	Lock nut M48x2	Black, PA-GF
95844A300	P35191RKP	6	Cr cs head tapping	screw ST3,5x19 DIN7982 A2
94997A300	P35164RKP	4	Cr.pan head tapping	screw ST3,5x16 DIN7981CH A2
14-8570	NA	1	Lock	standard medium-sized